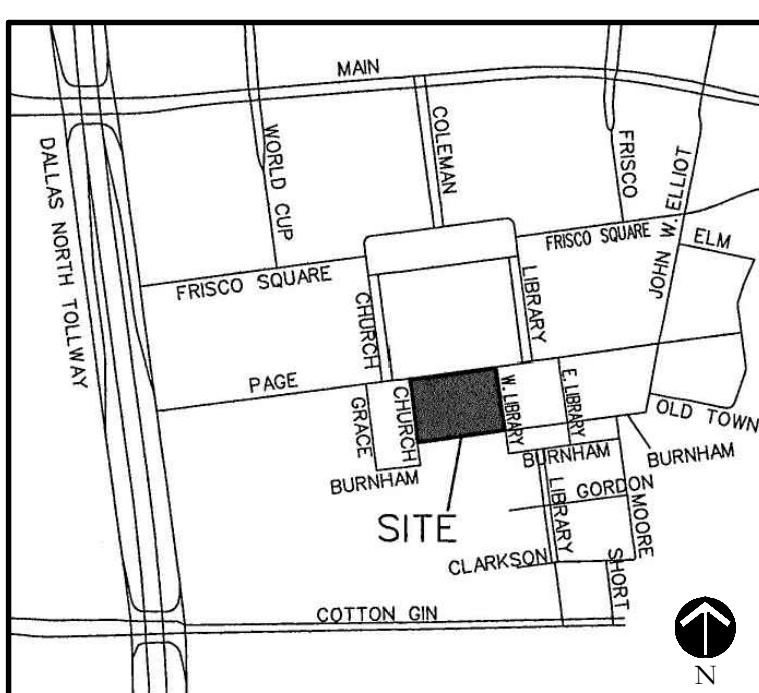


BLOCK A, LOT 1R  
FRISCO CITY HALL ADDITION  
CAB. 2010, PG. 9  
M.R.C.C.T.

LOT 4, BLOCK 1  
FRISCO SQUARE RESIDENTIAL  
CAB. 2014, PG. 424  
M.R.C.C.T.  
VACANT

LOT 1  
FRISCO SQUARE RESIDENTIAL  
CAB. 2007, PG. 380  
M.R.C.C.T.  
VACANT

NOTE:  
ALL LANDSCAPE AREAS SHOWN ON THIS PLAN SHALL RECEIVE 100% COVERAGE OF A PERMANENT IRRIGATION SYSTEM THAT ADHERES TO THE CITY OF FRISCO IRRIGATION STANDARDS.  
IRRIGATION PLANS SHALL BE SUBMITTED FOR CITY REVIEW AT THE TIME OF CONSTRUCTION DOCUMENT REVIEW AND COMMENT.  
REFER TO CIVIL PLANS FOR SIDEWALK LAYOUT AND DETAILING.



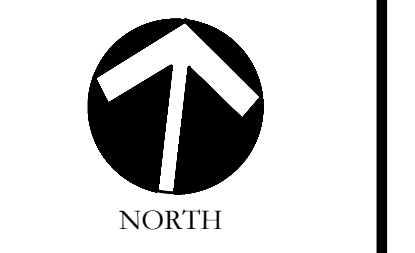
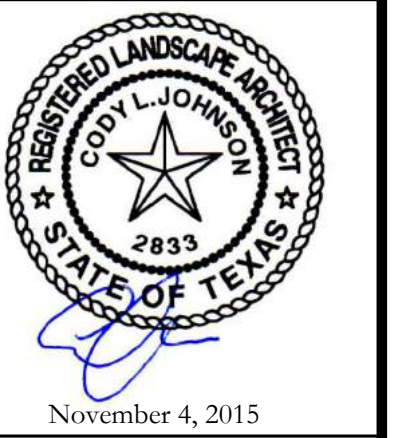
LOCATION MAP  
NOT TO SCALE

**OWNER / DEVELOPER:**  
NADEREH NAVAI  
15400 WINCHESTER BLVD.  
SUITE 37  
LOS GATOS, CA 95030

**CIVIL ENGINEER:**  
CORWIN ENGINEERING, INC.  
200 W. BELMONT, SUITE E  
ALLEN, TEXAS 75013  
PH. (972) 396-1200  
CONTACT: WARREN CORWIN

**LANDSCAPE ARCHITECT:**  
CODY JOHNSON STUDIO, LLC  
12217 CHATTANOOGA DR.  
FRISCO, TEXAS 75035  
PH. (903) 570-0162  
CONTACT: CODY JOHNSON, ASLA, LI

**CODY JOHNSON**  
s · t · u · d · i · o



Scale: 1" = 20'-0"

Bar is one inch on original drawing. If not one inch on this sheet, adjust scale as necessary.  
One Inch

**LANDSCAPE PLANS**  
Landscape Plan  
Liberty Square Townhomes  
City of Frisco, Collin County, Texas

CJS PROJECT NO.  
CEI003  
SHEET NO.  
L1 of 4

CITY PROJECT NO.



### Landscape Water Use Calculator

Development Name: Liberty Square Townhomes  
 Applicant: Cody Johnson Studio, LLC  
 Legal Description (Lot and Block): Open Space Areas and R.O.W.  
 Case Number: TBD Date: 6-Nov-15

**Step 1. Calculate Annual Landscape Water Allowance (LWA)**  
 Enter Landscape Area square feet: 15,470.00 LWA (Gallons): 268,559.20

**Step 2. Calculate the Estimated Landscape Water Allowance (ELWU)**  
 Total ELWU All Zones (not to exceed LWA): 256,050.96

**Zone #1**

1. Select Plant Type from list	3. Enter Landscape Zone Area	10,000.00
Moderate Water Use Zone	4. ELWU for this zone equals	163,388.24
2. Select Irrigation Type from list	Landscape Bed Areas	
Drip Emitters		

**Zone #2**

1. Select Plant Type from list	3. Enter Landscape Zone Area	4,240.00
Moderate Water Use Zone	4. ELWU for this zone equals	84,121.60
2. Select Irrigation Type from list	Common Bermuda Grass Areas	
High Efficiency Nozzles		

**Zone #3**

1. Select Plant Type from list	3. Enter Landscape Zone Area	1,230.00
Water Resource Zone	4. ELWU for this zone equals	8,541.12
2. Select Irrigation Type from list	Oklahoma River Rock Areas	
No irrigation/ temporary irrigation removed after 90 days		

### SITE FURNITURE LEGEND

- RENDEZVOUS 6'-0" FLAT BENCH L1371 BY ANOVA FURNISHINGS. STANDARD BLACK IN COLOR. (2 TOTAL)
- RENDEZVOUS TRASH RECEPTACLE L13780H BY ANOVA FURNISHINGS. STANDARD BLACK IN COLOR. (2 TOTAL)
- SUPERIOR PET WASTE ELIMINATOR STATION. ITEM SKU# E3 WWW.PETWASTEELIMINATOR.COM (2 TOTAL)
- RENDEZVOUS TABLE L1388 BY ANOVA FURNISHINGS. STANDARD BLACK IN COLOR. (1 TOTAL)
- RENDEZVOUS ADA TABLE L1395 BY ANOVA FURNISHINGS. STANDARD BLACK IN COLOR. (1 TOTAL)
- STANDARD PARK GRILL BY MIRACLE. #1104; 20"x14" COOKING SURFACE. STANDARD BLACK IN COLOR. (2 TOTAL)

### PLANT LIST

SYMBOL	KEY	ESTIMATED QUANTITY	COMMON NAME	SCIENTIFIC NAME	SIZE	SPACING	REMARKS
	SO	23	SHUMARD OAK	QUERCUS SHUMARDII	3" CALIPER	AS SHOWN	NURSERY GROWN; FULL HEAD; MINIMUM BRANCHING HEIGHT AT 6'-0"; MINIMUM 10'-0" OVERALL HEIGHT.
	CE	16	CEDAR ELM	ULMUS CRASSIFOLIA	3" CALIPER	AS SHOWN	NURSERY GROWN; FULL HEAD; MINIMUM BRANCHING HEIGHT AT 6'-0"; MINIMUM 10'-0" OVERALL HEIGHT.
	RB	10	FOREST PANSY REDBUD	CERCIS CANADENSIS 'FOREST PANSY'	45 GALLON	AS SHOWN	NURSERY GROWN; FULL HEAD; MINIMUM 8'-0" OVERALL HEIGHT.
		30	NELLY R. STEVENS HOLLY	ILEX X NELLIE R. STEVENS	15 GALLON	48" O.C.	CONTAINER GROWN; FULL PLANT.
		86	PURPLE DIAMOND LOROPETALUM	LOROPETALUM CHINENSIS 'PURPLE DIAMOND'	7 GALLON	48" O.C.	CONTAINER GROWN; FULL PLANT.
		170	DWARF BURFORD HOLLY	ILEX CORNUTA 'DWARF BURFORD'	5 GALLON	36" O.C.	CONTAINER GROWN; FULL PLANT.
		27	KNOCKOUT ROSE	ROSA SPP.	3 GALLON	36" O.C.	CONTAINER GROWN; FULL PLANT.
		54	DWARF MAIDEN GRASS	MISCANTHUS SINENSIS ADAGIO'	3 GALLON	36" O.C.	CONTAINER GROWN; FULL PLANT.
		24	PINKIE INDIAN HAWTHORN	RHAPHIOLEPIS INDICA 'PINKIE'	3 GALLON	36" O.C.	CONTAINER GROWN; FULL PLANT.
		80	INDIAN HAWTHORN SNOW	RHAPHIOLEPIS INDICA 'SNOW'	3 GALLON	36" O.C.	CONTAINER GROWN; FULL PLANT.
		3,150	LIRIOPE GRASS	LIRIOPE MUSCARI	1 GALLON	18" O.C.	CONTAINER GROWN; FULL PLANT.
		220	BLUE RUG JUNIPER	JUNIPERUS HORIZONTALIS	3 GALLON	36" O.C.	CONTAINER GROWN; FULL PLANT.
		4,240	COMMON BERMUDA GRASS	CYNODON DACTYLON	SQUARE FEET	SOLID SOD	MINIMUM 100% COVERAGE ALL AREAS SHOWN
		1,230	OKLAHOMA RIVER ROCK	N/A	SQUARE FEET	SOLID COVERAGE	3" DEPTH RIVER ROCK BED WITH LANDSCAPE FABRIC BENEATH AS SHOWN IN DETAILS. RIVER ROCK SHALL INCLUDE A MIXTURE OF TANS, BROWNS, GRAYS AND PINKS. RIVER ROCK SHALL BE AN EQUAL COMBINATION OF 1-2" AND 2-4" IN SIZE. REFER TO DETAIL 5/L3.

### GENERAL LANDSCAPE NOTES

#### INSPECTIONS:

- NO EXCAVATION SHALL OCCUR IN CITY R.O.W. WITHOUT A R.O.W. PERMIT--CONTACT THE PUBLIC WORKS DEPARTMENT.
- THE CONTRACTOR SHALL MARK ALL WATER LINES, SEWER LINES, AND TREE LOCATIONS PRIOR TO CALLING FOR ROW INSPECTION AND PERMIT.
- THE LANDSCAPE INSTALLATION SHALL COMPLY WITH APPROVED LANDSCAPE DRAWINGS PRIOR TO FINAL ACCEPTANCE BY THE CITY AND ISSUANCE OF A CERTIFICATE OF OCCUPANCY.
- WATER METERS, CLEANOUTS AND OTHER APPURTENANCES, SHALL BE ACCESSIBLE, ADJUSTED TO GRADE, CLEARLY MARKED WITH FLAGGING AND COMPLIANT WITH PUBLIC WORKS DEPARTMENT STANDARDS PRIOR TO CALLING FOR FINAL LANDSCAPE AND ROW INSPECTIONS.

#### LANDSCAPE STANDARDS:

- PLANTINGS AND LANDSCAPE ELEMENTS SHALL COMPLY WITH THE CITY'S ENGINEERING DESIGN STANDARDS, PUBLIC R.O.W. VISIBILITY REQUIREMENTS.
- UNLESS OTHERWISE SPECIFIED, TREES SHALL BE PLANTED NO LESS THAN 4' FROM CURBS, SIDEWALKS, UTILITY LINES, SCREENING WALLS AND OTHER STRUCTURES. THE CITY HAS FINAL APPROVAL FOR ALL TREE PLACEMENTS.
- A MINIMUM THREE FEET (3') RADIUS AROUND A FIRE HYDRANT MUST REMAIN CLEAR OF LANDSCAPE PURSUANT TO THE FIRE CODE.
- STREET TREES, WHERE REQUIRED, SHALL BE (10') MINIMUM FROM THE EDGE OF A STORM SEWER CURB INLET BOX AND THE EDGE OF THE ROOT BALL SHALL BE (4') MINIMUM FROM THE WATER METER.
- THE AMERICAN STANDARD FOR NURSERY STOCK (ANSI Z60-1-2004) SPECIFICATIONS SHALL GOVERN PLANT QUALIFICATIONS, GRADES, AND STANDARDS.
- TREE PLANTING SHALL COMPLY WITH DETAILS HEREIN AND THE INTERNATIONAL SOCIETY OF ARBORICULTURE (ISA) STANDARDS.
- A 2-3" LAYER OF MULCH SHALL BE PROVIDED AROUND THE BASE OF THE PLANTED TREE. THE MULCH SHALL BE PULLED BACK 4" FROM THE TRUNK OF THE TREE.
- TREE PITS SHALL BE TESTED FOR WATER PERCOLATION. IF WATER DOES NOT DRAIN OUT OF TREE PIT WITHIN 24 HOURS, THE TREE SHALL BE MOVED OR DRAINAGE SHALL BE PROVIDED.
- ALL BEDS TO HAVE 3" OF COMPOSTED SOIL. LIVING EARTH TECHNOLOGY, OR APPROVED EQUAL TILLED AND TURNED TO A DEPTH OF 8" MINIMUM.
- ALL PLANT BEDS SHALL BE TOP-DRESSED WITH A MINIMUM OF 3 INCHES OF HARDWOOD MULCH.
- NATIVE SITE TOPSOIL IS TO BE PROTECTED FROM EROSION OR STOCKPILED. NATIVE SITE TOPSOIL SHALL BE LABORATORY TESTED BY AN ACCREDITED LABORATORY AND AMENDED PER SAID LABORATORY'S RECOMMENDATIONS.

#### IRRIGATION STANDARDS:

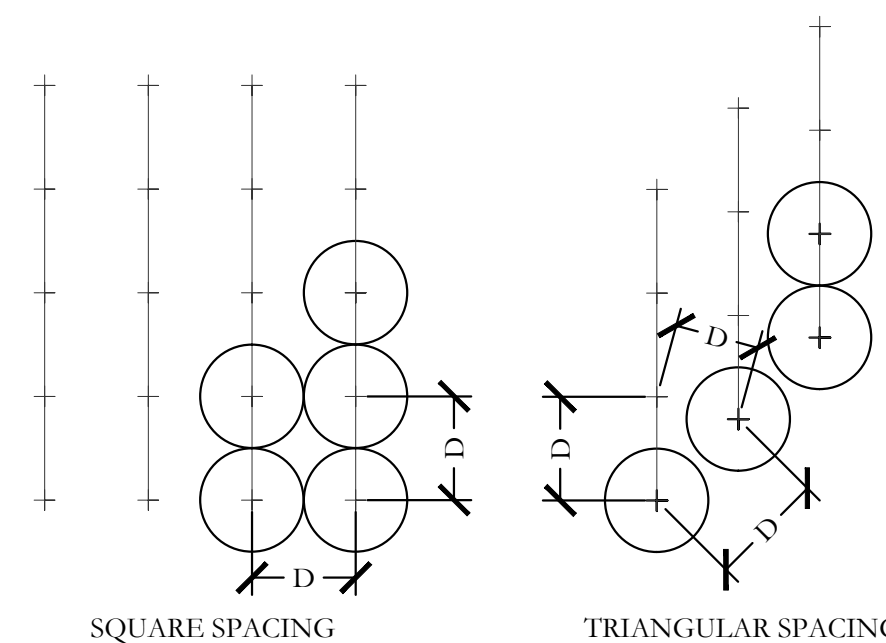
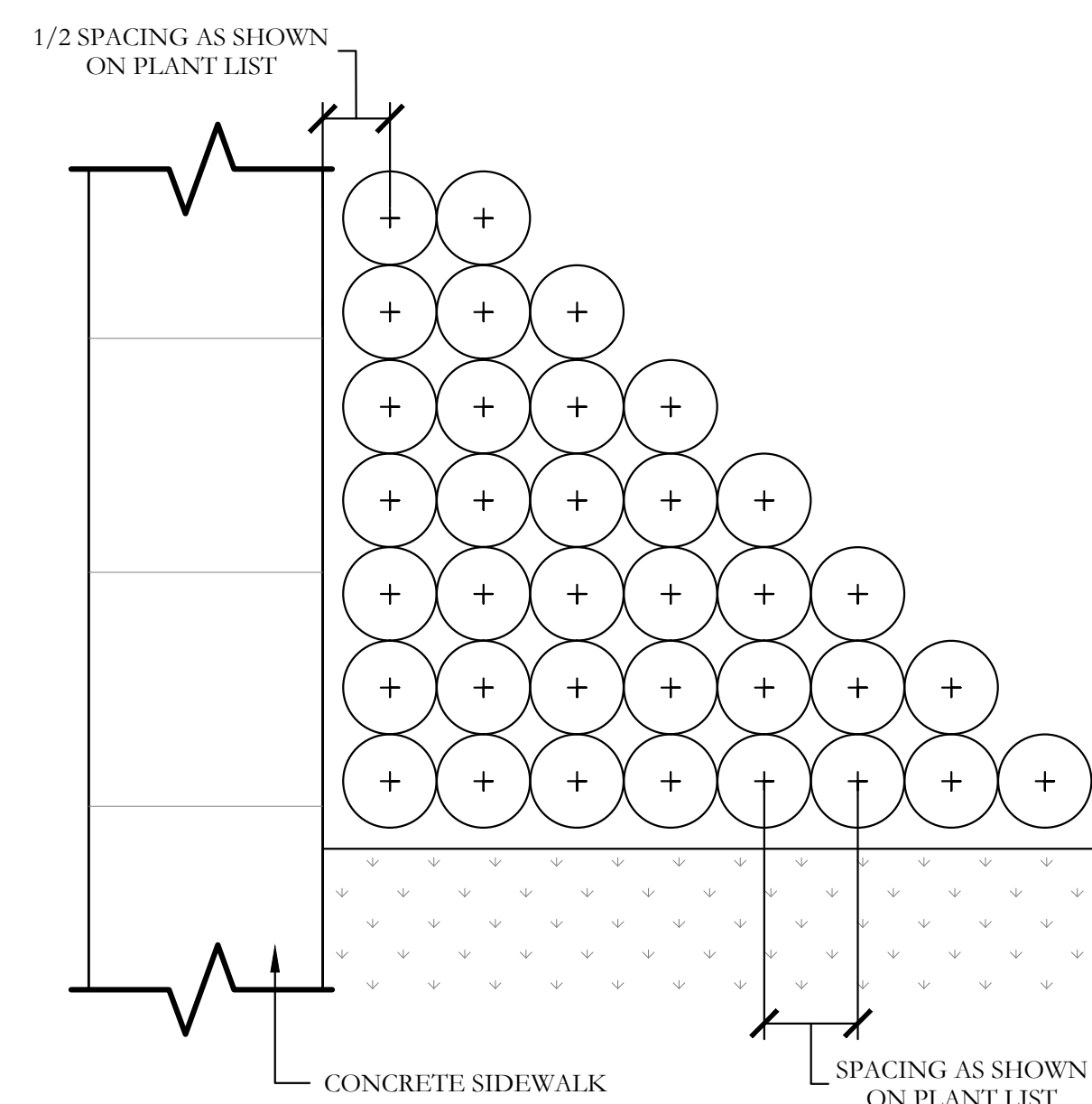
- ANY CHANGES TO THESE APPROVED IRRIGATION DRAWINGS SHALL BE AUTHORIZED BY THE CITY. CONTACT DEVELOPMENT SERVICES FOR AN IRRIGATION PERMIT PRIOR TO INSTALLING THE IRRIGATION SYSTEM.
- IRRIGATION OVER-SPRAY ON STREETS AND WALKS IS PROHIBITED.
- MAINLINES, VALVES, OR CONTROL WIRES SHALL NOT BE LOCATED IN THE CITY'S ROW.
- ET IRRIGATION CONTROLLERS SHALL BE PROGRAMMED AND ADJUSTED TO NOT EXCEED THE LANDSCAPE WATER ALLOWANCE (LWA) PRIOR TO APPROVAL OF LANDSCAPE INSTALLATION.
- VALVES SHALL BE LOCATED A MINIMUM OF (3') AWAY FROM STORM SEWERS, AND SANITARY SEWER LINES AND 5 FEET FROM CITY FIRE HYDRANTS AND WATER VALVES.
- THE BORE DEPTH UNDER STREETS, DRIVE AISLES, AND FIRE LANES SHALL PROVIDE (2') OF CLEARANCE (MINIMUM).
- IRRIGATION HEADS THAT RUN PARALLEL AND NEAR PUBLIC WATER AND SANITARY SEWER LINES, SHALL BE FED FROM STUBBED LATERALS OR BULL-BEADS. A MINIMUM FIVE FOOT (5') SEPARATION IS REQUIRED BETWEEN IRRIGATION MAIN LINES AND LATERALS THAT RUN PARALLEL TO PUBLIC WATER AND SANITARY SEWER LINES.
- NO VALVES, BACKFLOW PREVENTION ASSEMBLIES, QUICK COUPLERS ETC. SHALL BE LOCATED CLOSER THAN 10' FROM THE CURB AT STREET OR DRIVE INTERSECTION.

#### MAINTENANCE STANDARDS:

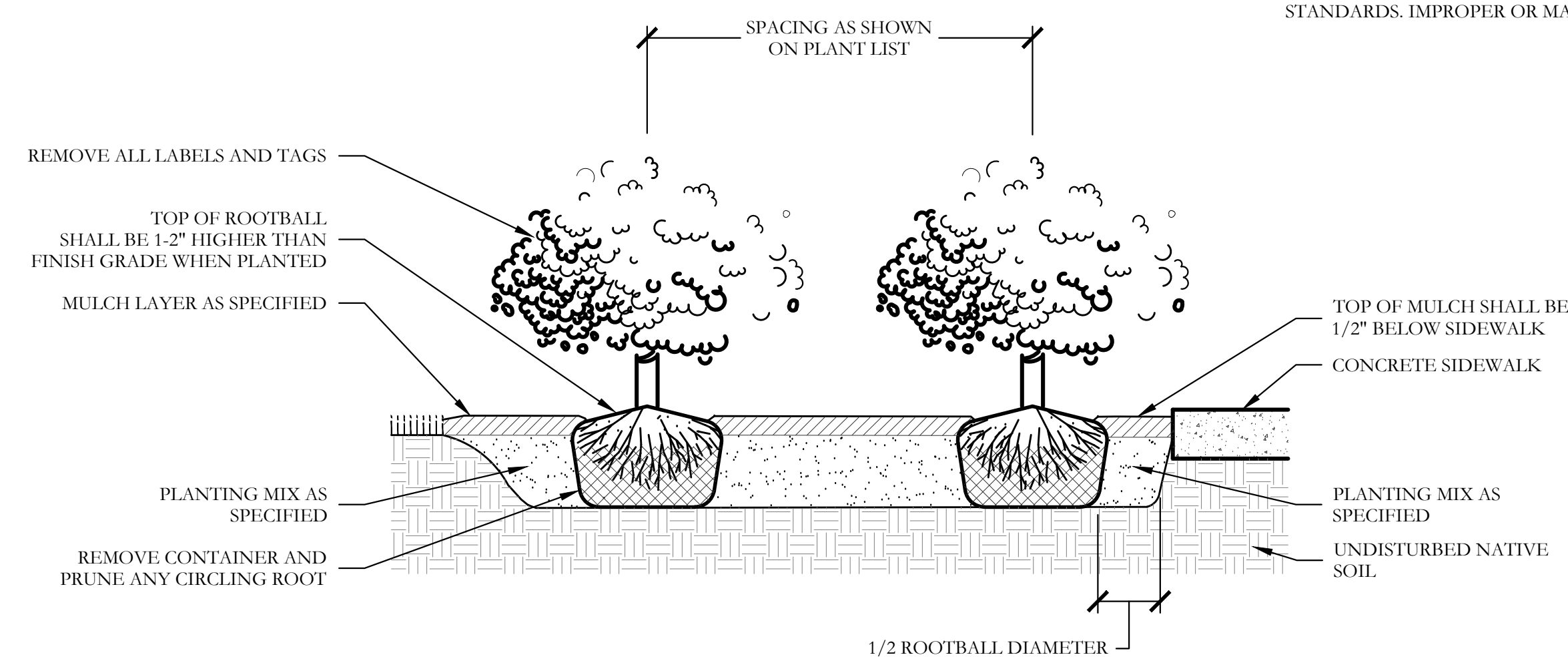
- THE OWNER SHALL BE RESPONSIBLE FOR THE ESTABLISHMENT, MAINTENANCE, AND VIGOR OF PLANT MATERIAL IN ACCORDANCE WITH THE DESIGN INTENT AND AS APPROPRIATE FOR THE SEASON OF THE YEAR.
- LANDSCAPE AND OPEN AREAS SHALL BE FREE OF TRASH, LITTER AND WEEDS.
- NO PLANT MATERIAL SHALL BE ALLOWED TO ENCRONCH ON R.O.W., SIDEWALKS OR EASEMENTS TO THE EXTENT THAT VISION OR ROUTE OF TRAVEL FOR VEHICULAR, PEDESTRIAN, OR BICYCLE TRAFFIC IS IMPEDED.
- TREE MAINTENANCE SHALL BE IN ACCORDANCE WITH THE STANDARDS OF THE INTERNATIONAL SOCIETY OF ARBORICULTURE.
- TREE STAKING MATERIALS, IF USED, SHALL BE REMOVED AFTER (1) GROWING SEASON, NO MORE THAN (1) YEAR AFTER INSTALLATION (STEEL TREE STAKES, WIRES, AND HOSES ARE PROHIBITED).

#### TREE PROTECTION NOTES:

- CONTACT DEVELOPMENT SERVICES FOR A TREE REMOVAL PERMIT PRIOR TO REMOVAL OR TRANSPLANTING OF ANY TREES.
- ALL TREES WHICH ARE TO REMAIN ON SITE SHALL BE PROTECTED WITH A (4') TALL BRIGHTLY COLORED PLASTIC FENCE, OR SILT FENCE, PLACED AT THE DRIP LINE OF THE TREES.
- PRIOR TO THE PRE-CONSTRUCTION MEETING OR OBTAINING A GRADING PERMIT, ALL TREE MARKINGS AND PROTECTIVE FENCING SHALL BE INSTALLED BY THE OWNER AND BE INSPECTED BY DEVELOPMENT SERVICES.
- NO EQUIPMENT SHALL BE CLEANED, OR HARMFUL LIQUIDS DEPOSITED WITHIN THE LIMITS OF THE ROOT ZONE OF TREES WHICH REMAIN ON SITE.
- NO SIGNS, WIRES, OR OTHER ATTACHMENTS SHALL BE ATTACHED TO ANY TREE TO REMAIN ON SITE.
- VEHICULAR AND CONSTRUCTION EQUIPMENT SHALL NOT PARK OR DRIVE WITHIN THE LIMITS OF THE DRIP LINE.
- GRADE CHANGES IN EXCESS OF 3 INCHES (CUT OR FILL) SHALL NOT BE ALLOWED WITHIN A ROOT ZONE, UNLESS ADEQUATE TREE PRESERVATION METHODS ARE APPROVED BY THE CITY.
- NO TRENCHING SHALL BE ALLOWED WITHIN THE DRIP-LINE OF A TREE, UNLESS APPROVED BY THE CITY.
- ALL REMOVED TREES SHALL BE CHIPPED AND USED FOR MULCH ON SITE OR HAULED OFF-SITE.
- ALL TREE MAINTENANCE TECHNIQUES SHALL BE IN CONFORMANCE WITH INDUSTRY IDENTIFIED STANDARDS. IMPROPER OR MALICIOUS PRUNING TECHNIQUES ARE STRICTLY PROHIBITED.



NOTE:  
 1. TRIANGULAR SPACING IS PREFERRED. USE SQUARE SPACING ONLY IN SMALL RECTILINEAR AREAS.  
 2. "D" EQUALS THE SPACING DISTANCE AS SPECIFIED ON THE PLANT LEGEND.



1 TYPICAL SHRUB AND GROUNDCOVER PLANTING PLAN/SECTION

NOT TO SCALE

CODY JOHNSON  
s . t . u . d . i . o



12717 CLAYTON OAK DR. FRISCO, TEXAS 75055  
 PH: (972) 574-1626  
 EMAIL: CODY@CODYJOHNSONSTUDIO.COM



November 4, 2015

Bar is one inch on original drawing. If not one inch on this sheet, adjust scale as necessary.

One Inch

LANDSCAPE PLANS

Landscape Details

Liberty Square Townhomes

City of Frisco, Collin County, Texas

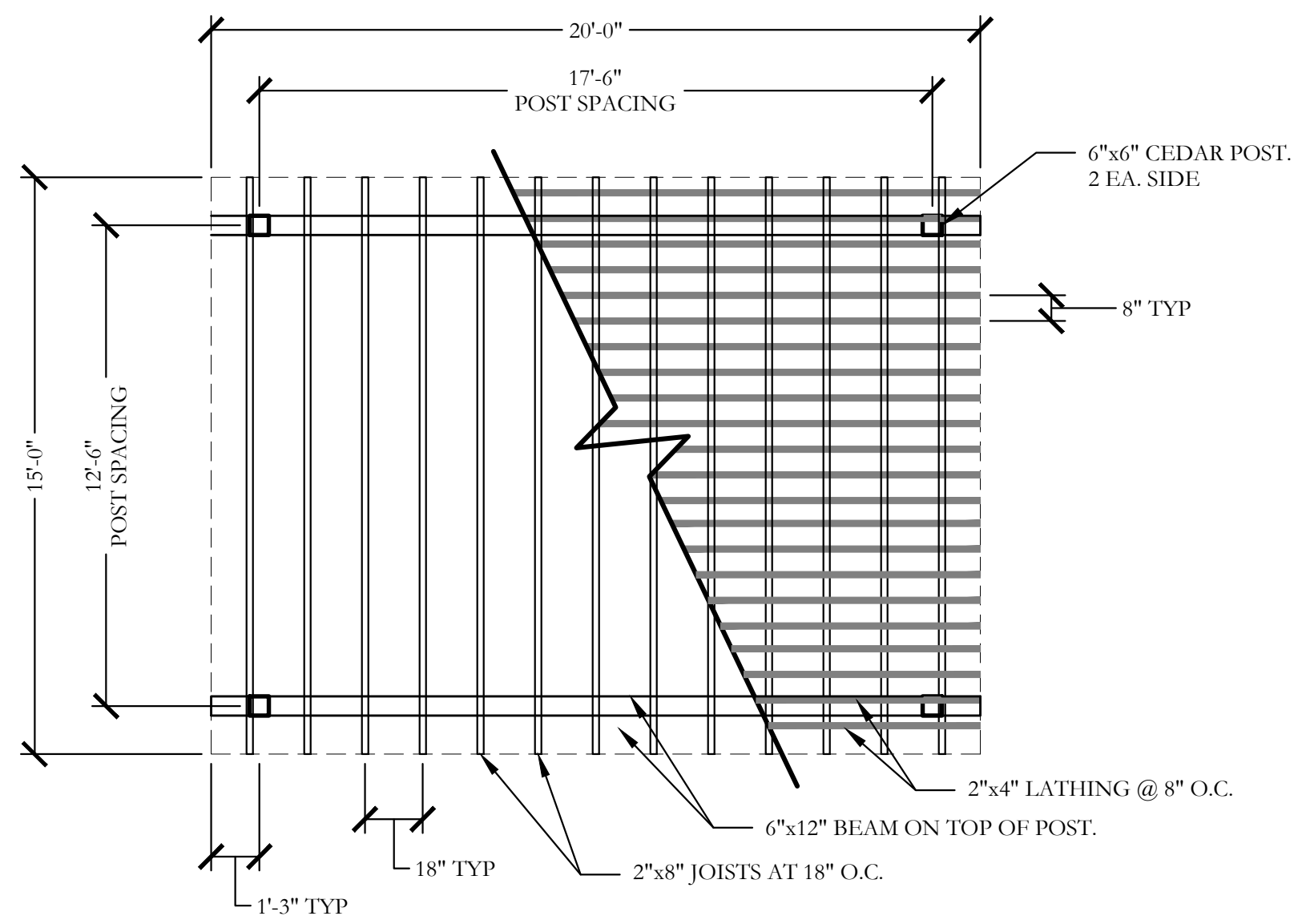
CJS PROJECT NO.

CEI003

SHEET NO.

L2 of 4

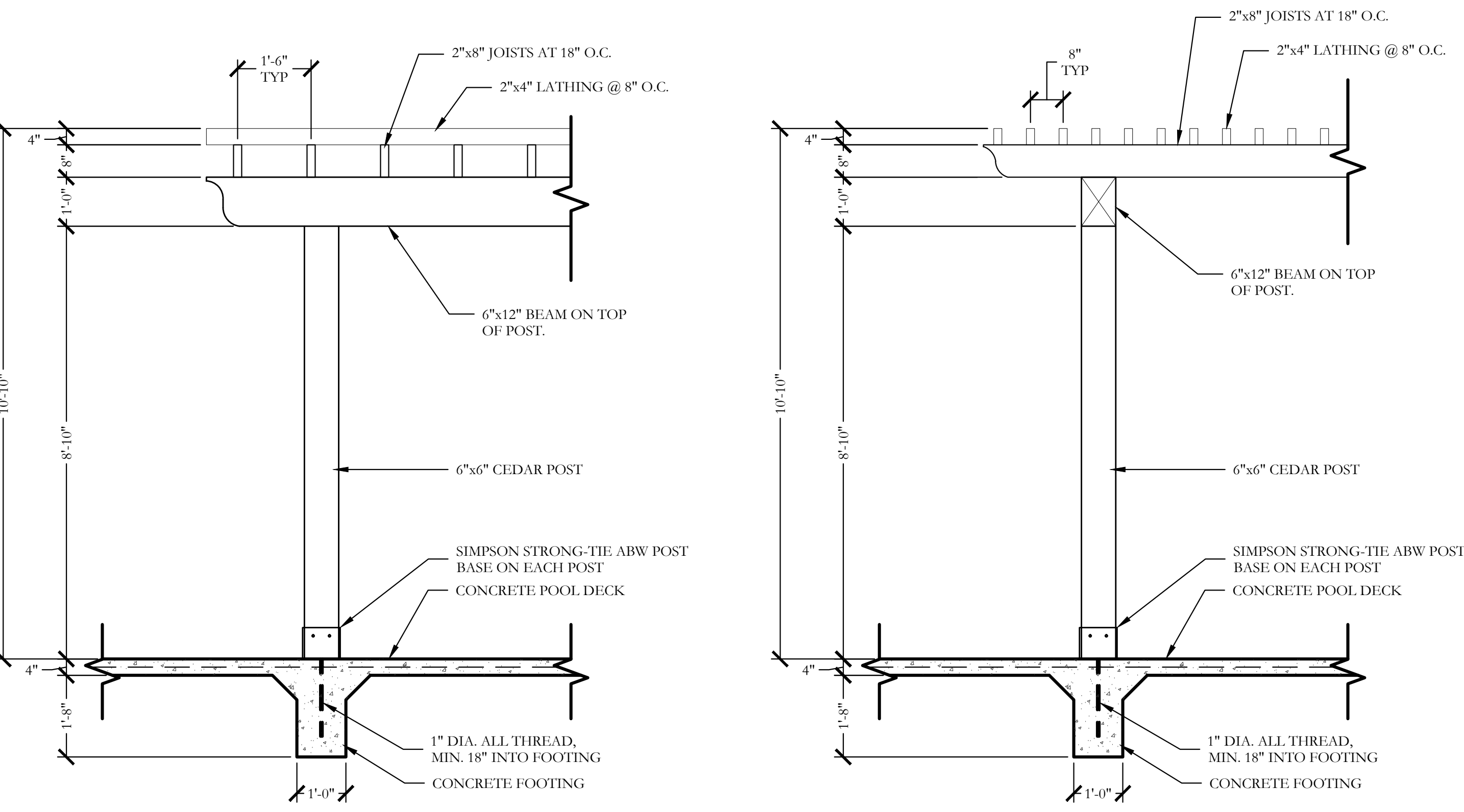
CITY PROJECT NO.



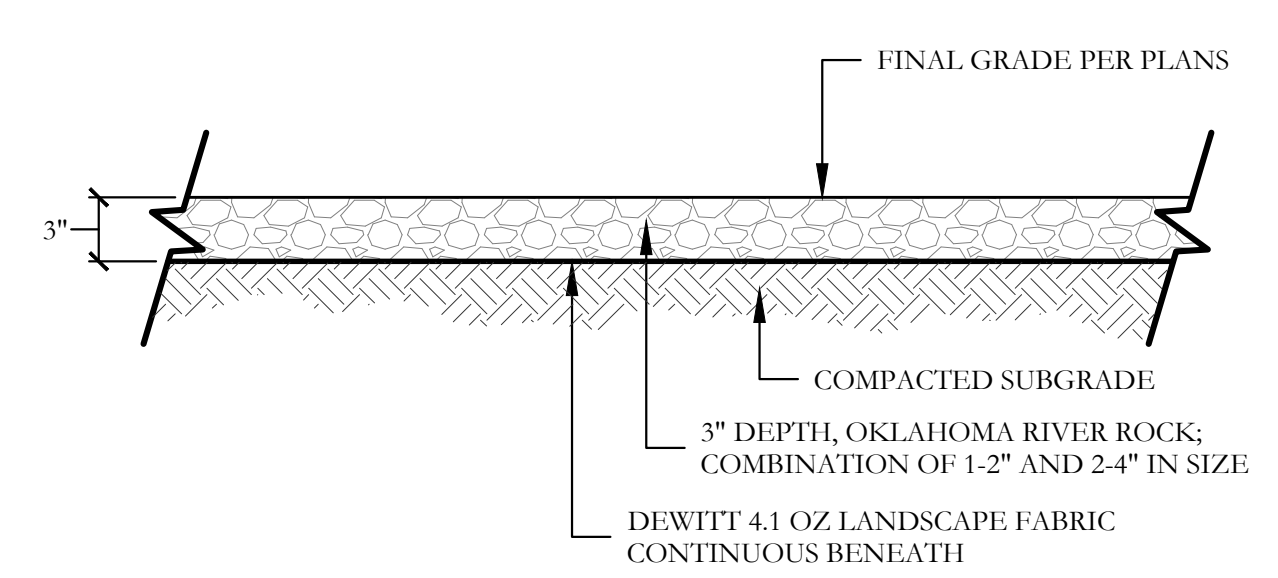
**CEDAR SHADE STRUCTURE NOTES**

1. THE CONTRACTOR IS RESPONSIBLE FOR MAKING HIMSELF FAMILIAR WITH ALL UNDERGROUND UTILITIES, PIPES, AND STRUCTURES EITHER SHOWN OR NOT SHOWN ON THE PLANS. THE CONTRACTOR WILL BE RESPONSIBLE FOR ANY COST INCURRED DUE TO DAMAGE OR REPLACEMENT OF SAID UTILITIES AND STRUCTURES CAUSED BY HIS FORCES VERIFY LOCATION OF ALL UTILITIES WITH THE CITY AND VARIOUS UTILITY COMPANIES BEFORE DRILLING PIERS.
2. ALL CONCRETE USED IN FOOTINGS SHALL HAVE A MINIMUM COMPRESSIVE STRENGTH OF 3,000 PSI @ 28 DAYS.
3. THE CONTRACTOR IS RESPONSIBLE FOR ALL NECESSARY AND REQUIRED PERMITS AND INSPECTIONS. CONSTRUCTION SHALL BE IN ACCORDANCE WITH CITY OF FRISCO CODES AND REQUIREMENTS.
4. WOOD MATERIAL FOR FENCE:
  - 4.1. JOIST- CEDAR, #2 GRADE OR BETTER.
  - 4.2. BEAM- CEDAR, #2 GRADE OR BETTER.
  - 4.3. POST- CEDAR, #2 GRADE OR BETTER.
5. ALL FASTENERS, NAILS, BRACKETS, STEEL POSTS, ETC. ARE TO BE HOT DIPPED GALVANIZED.
6. ACCURATELY CUT, FIT FASTEN MEMBERS, MAKE PLUMB, LEVEL, TRUE, AND RIGID. DO NOT SPLICE INDIVIDUAL FRAMING MEMBERS BETWEEN SUPPORTS. ERECT FACES OF FRAMING MEMBERS IN STRAIGHT EVEN PLANES TO RECEIVE FINISH MATERIALS. REMOVE ALL MARKS, STAMPS, DIRT, LOOSE FIBERS FROM ALL WOOD SURFACES.
7. CONTRACTOR IS RESPONSIBLE FOR OBTAINING ALL REQUIRED PERMITS.

1 CEDAR SHADE STRUCTURE LAYOUT (15'x20')  
PLAN SCALE: 1/4" = 1'-0"



2 CEDAR SHADE STRUCTURE DETAILS  
SECTION SCALE: 1/2" = 1'-0"



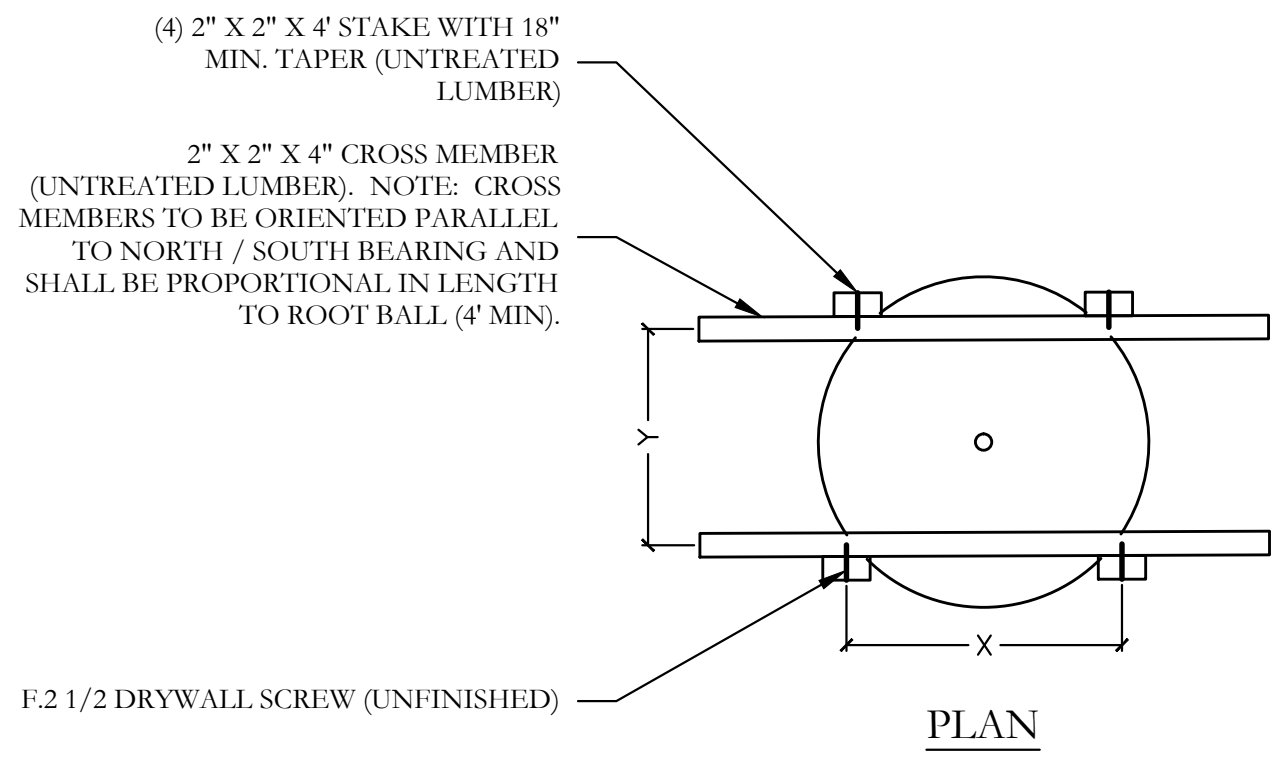
3 OKLAHOMA RIVER ROCK BED  
SECTION SCALE: 1" = 1'-0"

**GENERAL PAVING NOTES**

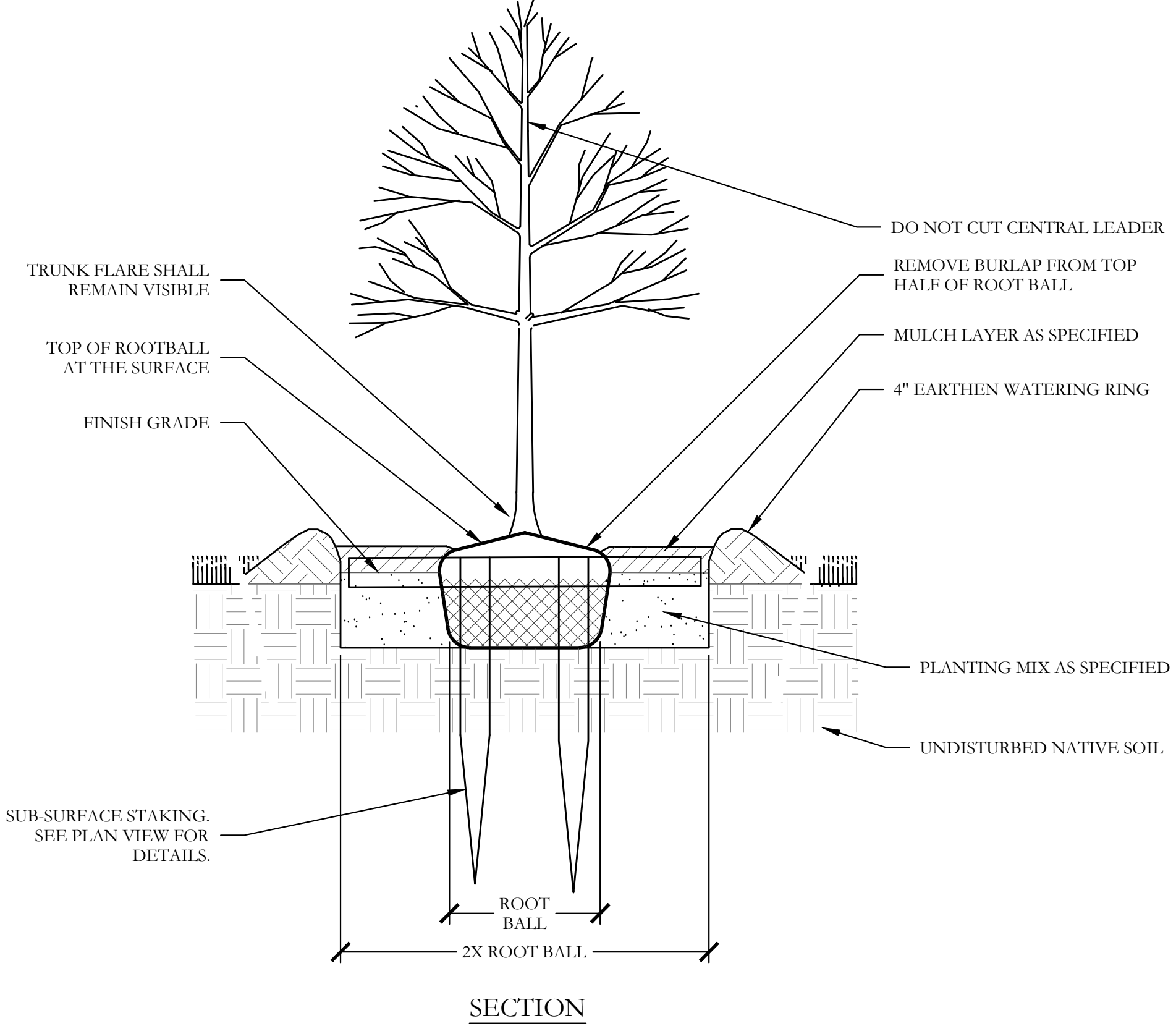
1. THE LAYOUT OF ALL PROPOSED PAVING SHALL BE THE RESPONSIBILITY OF THE CONTRACTOR AND SHALL BE REVIEWED BY THE OWNER'S REPRESENTATIVE PRIOR TO CONSTRUCTION.
2. ALL PAVING CONSTRUCTION SHALL BE IN ACCORDANCE WITH THE CONSTRUCTION DETAILS SHOWN HEREIN.
3. THE SUB GRADE BENEATH ALL PAVING SHALL BE COMPACTED TO 95% STANDARD PROCTOR DENSITY.
4. THE EDGES OF ALL FINISHED PAVING AND PLAYGROUND EDGES SHALL BE SMOOTH, GRACEFUL, CURVILINEAR OR STRAIGHT-FORMS WITH NO INTERRUPTIONS SUCH AS CHORDS, WAVES, JOGS, OR MISSED TANGENTS. ANY PAVEMENT WITH SUCH INTERRUPTIONS SHALL BE SUBJECT TO REPLACEMENT AT NO COST TO THE OWNER.
5. CONCRETE SHALL NOT BE POURED UNTIL THE OWNER'S REPRESENTATIVE HAS INSPECTED THE FORMS AND REINFORCING. THE CONTRACTOR SHALL NOTIFY THE OWNER'S REPRESENTATIVE AT LEAST 48 HOURS IN ADVANCE OF ALL CONCRETE POURS.
6. PROVIDE AN UNDERCUT HEADER WHEREVER PROPOSED CONCRETE PAVING IS TO ABUT EXISTING CONCRETE PAVING.
7. ALL EXPOSED VERTICAL CONCRETE SURFACES SHALL HAVE A HAND RUBBED FINISH WITH NO HONEYCOMBS OR VOIDS.
8. ALL CONSTRUCTION SHALL CONFORM WITH THE CITY OF FRISCO CONSTRUCTION STANDARDS AND DETAILS.

**GENERAL SIDEWALK NOTES:**

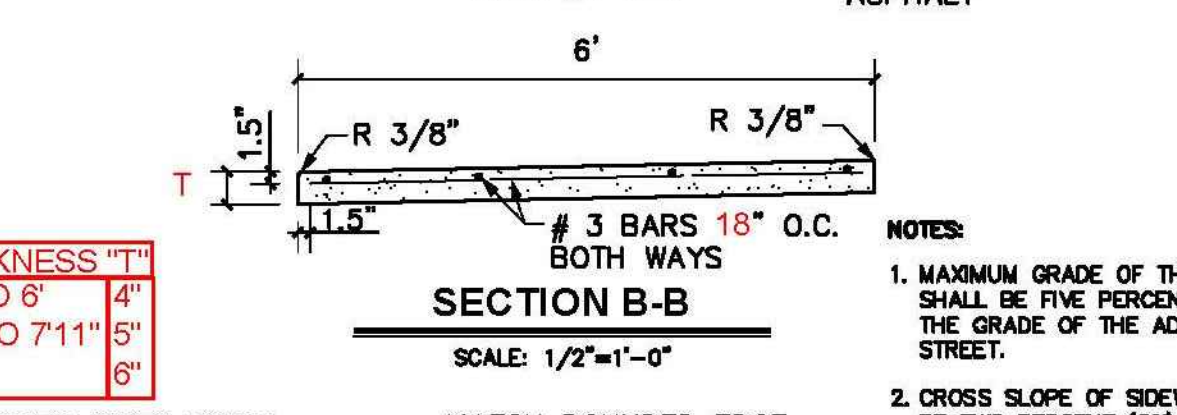
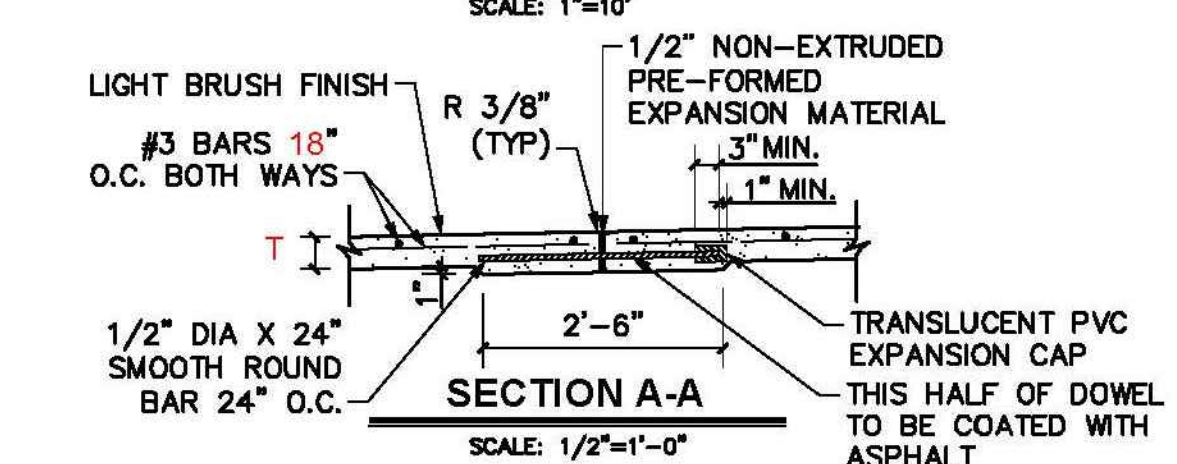
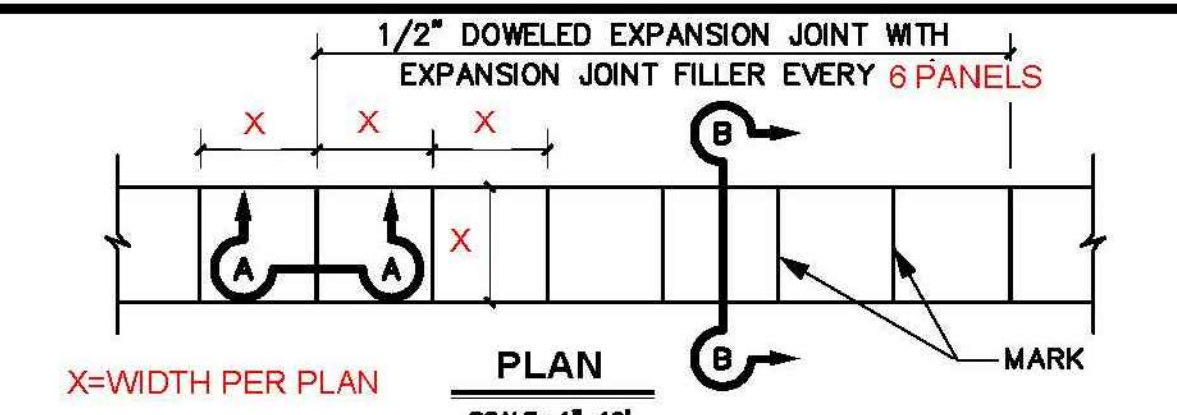
1. SIDEWALK PAVING TO HAVE A MAX. 2% CROSS SLOPE AS SHOWN.
2. SIDEWALK TO HAVE A 10'-0" MIN. CLEARANCE ABOVE SIDEWALK. PRUNE ALL OVERHANGING TREE LIMBS TO MAINTAIN THIS CLEARANCE.
3. SIDEWALK PAVING TO BE ON A MAXIMUM 5% LONGITUDINAL SLOPE.
4. SIDEWALK CONCRETE TO HAVE A MINIMUM COMPRESSIVE STRENGTH OF 3,000 PSI.
5. SIDEWALK CONCRETE TO HAVE A MEDIUM BROOM FINISH UNLESS NOTED ON THE PLANS.
6. CONCRETE PAVING 5'-0" WIDE TO HAVE A MINIMUM THICKNESS OF 4" AS SHOWN ON THE CITY OF FRISCO STANDARD DETAIL SHEET BELOW.
7. CONCRETE PAVING 8'-0" WIDE AND GREATER SHALL HAVE A MINIMUM THICKNESS OF 6", WITH #3 BARS 24" O.C. BOTH WAYS.
8. ALL BARRIER FREE RAMP SHALL ADHERE TO TXDOT STANDARDS.



5 STANDARD SIDEWALK DETAILS  
SECTION/PLAN VIEW SCALE: AS MARKED

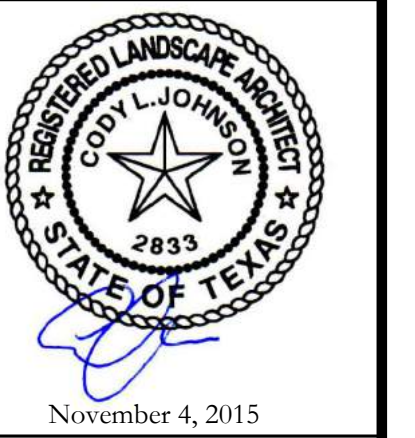


4 TYPICAL TREE PLANTING  
SECTION NOT TO SCALE



- NOTES:**
1. MAXIMUM GRADE OF THE SIDEWALK SHALL BE FIVE PERCENT (5%) OR THE GRADE OF THE ADJACENT STREET.
  2. CROSS SLOPE OF SIDEWALK SHALL BE TWO PERCENT (2%) MAX PER A.D.A.
  3. OTHER THAN 6' SIDEWALK WIDTH MAY BE SPECIFIED BY OWNER. 6' SIDEWALK WIDTH FOR A & B THROUGHFARES.
  4. SIDEWALK SHALL BE CLASS A CONCRETE UNLESS OTHERWISE SPECIFIED BY OWNER.
  5. ALL HONEYCOMB IN BACK OF CURB TO BE TROWEL-PLASTERED BEFORE POURING SIDEWALK.
  6. LUG MAY BE FORMED BY SHAPING SUBGRADE TO APPROXIMATE DIMENSIONS SHOWN.

FRISCO STANDARD CONSTRUCTION DETAIL  
REINFORCED CONCRETE SIDEWALK  
SCALE: AS MARKED  
REVISED: MAR 2012  
P22



November 4, 2015

Bar is one inch on original drawing. If not one inch on this sheet, adjust scale as necessary.  
One Inch



**L1371  
RENDEZVOUS FLAT BENCH**  
6" slotted steel flat bench, portable/  
surface mount

211 North Lindbergh Blvd.  
St. Louis, MO 63141  
888.535.5005 tel  
314.754.0835 fax  
specify@anovafurnishings.com  
anovafurnishings.com

**Material**  
The seat is 71.12" long and is composed of 12-gauge slotted steel with a .75" gap slotted pattern. The seat is protected by Fusion Advantage™, a plastisol coating with an average .125" thickness and a high-gloss powder coat.

The bench ends are cast iron and are protected by a fade resistant powder coat finish featuring a state of the art primer proven to prevent rusting. The bench is designed to be portable for flexibility in placement, and the legs have feet that can accommodate surface mounting to prevent movement. Mounting hardware is not included. The capacity of the bench is 200 lbs per linear foot.

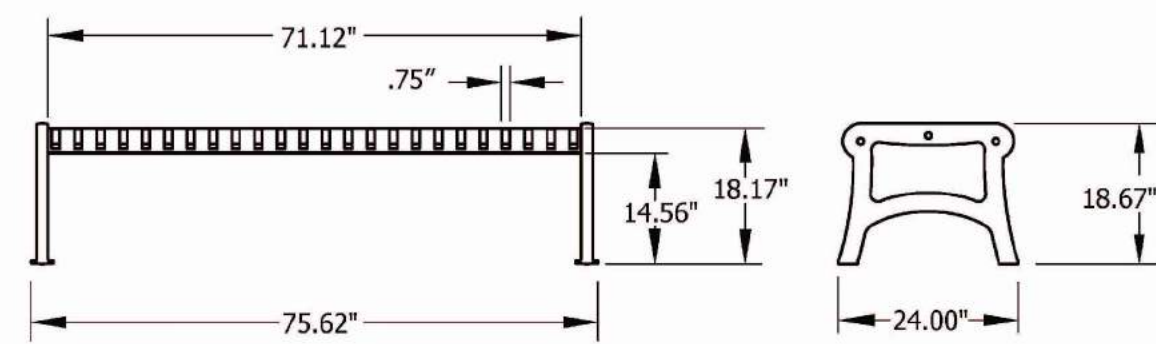
**Finish**  
Fusion Advantage is a heat fused plastisol coating that creates an impervious rustproof barrier and resists UV deterioration, mildew, staining and fading. The finish has been tested to the requirements of ASTM E1334 and is determined to be in compliance with California Uniform Fire Code 1103.2.1.4.2. A state of the art primer is applied to all of the under supports, providing extreme rust fighting protection and durability. Treated components exceed the industry standard by 34% in testing by independent sources.

**Color**  
This product is available in the following vibrant colors: Black, Blue, Bronze, Brown, Burgundy, Camel, Charcoal, Evergreen, Gray, Navy, Orange, Purple, Red, Sage, Silver, Teal, Vanilla, White, and Yellow.

**Assembly**  
The bench requires some assembly. Stainless steel assembly hardware is included.

**Maintenance**  
The product is virtually maintenance-free and requires only periodic cleaning with a sponge and a solution of mild detergent and water to remove surface dirt. Do not clean with solvent or petroleum based products.

**Warranty**  
20-year limited structural warranty with 7-year finish warranty from the date of purchase; Fusion Advantage components further warrants components will not rust, peel, chip, crack, mold or mildew for 7 years.



Shipping Information							
Unit Wt.	Unit Shipping Wt. UPS	Unit Shipping Wt. Truck (14 Units)	Unit Ship Size w/Pallet	Max Units per Pallet	Pallet Wt. 68" x 24"	Total No. Pkgs	Shipping Class
143 lbs	N/A	155 lbs/unit	29 cu. ft.	4	100 lbs	3	70

Revised: 10/06/13-5 Copyright © 2013 ANOVA™

1 PEDESTRIAN BENCH DETAIL  
MANUFACTURER SPECIFICATION SHEET NTS



**L13780H  
RENDEZVOUS RECEPTACLE**  
32-gallon slotted steel receptacle  
with rubber feet and plastic liner

211 North Lindbergh Blvd.  
St. Louis, MO 63141  
888.535.5005 tel  
314.754.0835 fax  
specify@anovafurnishings.com  
anovafurnishings.com

**Material**  
The receptacle is 39.00" tall and is composed of 12-gauge slotted steel with a .75" gap slotted pattern. The receptacle is protected by Fusion Advantage™, a plastisol coating with an average .125" thickness and a high-gloss powder coat. The receptacle includes a 14-gauge spun steel open hood top. The top is protected by a fade resistant powder coat finish featuring a state of the art primer proven to prevent rusting. The top includes a 14" security strap and lifts off for easy trash removal.

The receptacle is designed to be portable for flexibility in placement. The receptacle has rubber feet which are adjustable to assist in leveling the receptacle. The capacity of the receptacle is 32 gallons. The reusable plastic liner is made of black high-density polyethylene.

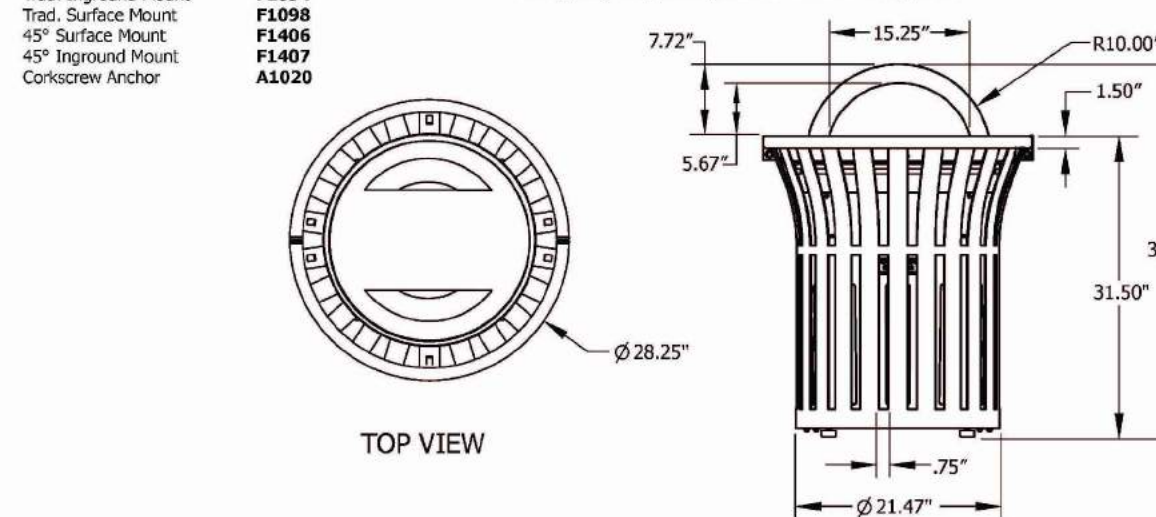
**Finish**  
Fusion Advantage is a heat fused plastisol coating that creates an impervious rustproof barrier and resists UV deterioration, mildew, staining and fading. The finish has been tested to the requirements of ASTM E1334 and is determined to be in compliance with California Uniform Fire Code 1103.2.1.4.2.

**Color**  
This product is available in the following vibrant colors: Black, Blue, Bronze, Brown, Burgundy, Camel, Charcoal, Evergreen, Gray, Navy, Orange, Purple, Red, Sage, Silver, Teal, Vanilla, White, and Yellow.

**Assembly**  
The receptacle is shipped fully assembled and ready for use.

**Maintenance**  
The product is virtually maintenance-free and requires only periodic cleaning with a sponge and a solution of mild detergent and water to remove surface dirt. Do not clean with solvent or petroleum based products.

**Warranty**  
20-year limited structural warranty with 7-year finish warranty from the date of purchase; Fusion Advantage components further warrants components will not rust, peel, chip, crack, mold or mildew for 7 years.



Shipping Information							
Unit Wt.	Unit Shipping Wt. UPS	Unit Shipping Wt. Truck (14 Units)	Unit Ship Size w/Pallet	Max Units per Pallet	Pallet Wt. 68" x 24"	Total No. Pkgs	Shipping Class
95 lbs	N/A	109 lbs/unit	33 cu. ft.	3	50 lbs	2	100

Revised: 02/01/14 Copyright © 2013 ANOVA™

2 TRASH RECEPTACLE DETAIL  
MANUFACTURER SPECIFICATION SHEET NTS



**L1388S  
RENDEZVOUS TABLE**  
46" diameter steel table, 4 contour  
swivel seats, portable mount

211 North Lindbergh Blvd.  
St. Louis, MO 63141  
888.535.5005 tel  
314.754.0835 fax  
specify@anovafurnishings.com  
anovafurnishings.com

**Material**  
The table is 46.25" in diameter and features four contour swivel seats. The table top is 12-gauge steel and features a durable 1.5" square steel tube edge. The seats are 12-gauge slotted steel with a .75" gap slotted pattern and feature a reinforced frame connection. The seats swivel 90 degrees to each side for ease of entry and exit and are designed to automatically return to their original position. The table top and seats are protected by Fusion Advantage™, a plastisol coating with an average .125" thickness and a high-gloss powder coat. The table also features a 1.64" diameter umbrella hole in the center with a built-in umbrella holder. The table top is designed to support 100 lbs per square foot and the seats will support 200 lbs per linear foot.

The frame and legs are made of 2.38" O.D. steel tubing protected by a fade resistant powder coat finish featuring a state of the art primer proven to prevent rusting. The frame is portable in design allowing for flexibility in placement. The legs feature feet with predrilled holes for surface mounting to prevent movement. Mounting hardware is not included.

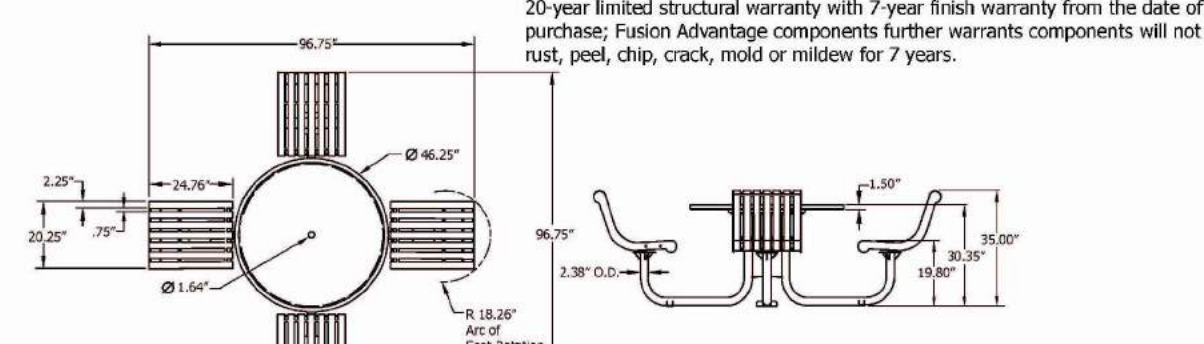
**Finish**  
Fusion Advantage is a heat fused plastisol coating that creates an impervious rustproof barrier and resists UV deterioration, mildew, staining and fading. The finish has been tested to the requirements of ASTM E1334 and is determined to be in compliance with California Uniform Fire Code 1103.2.1.4.2. A state of the art primer is applied to all of the under supports, providing extreme rust fighting protection and durability. Treated components exceed the industry standard by 34% in testing by independent sources.

**Color**  
This product is available in the following vibrant colors: Black, Blue, Bronze, Brown, Burgundy, Camel, Charcoal, Evergreen, Gray, Navy, Orange, Purple, Red, Sage, Silver, Teal, Vanilla, White, and Yellow.

**Assembly**  
The table requires some assembly. Stainless steel assembly hardware is included.

**Maintenance**  
The product is virtually maintenance-free and requires only periodic cleaning with a sponge and a solution of mild detergent and water to remove surface dirt. Do not clean with solvent or petroleum based products.

**Warranty**  
20-year limited structural warranty with 7-year finish warranty from the date of purchase; Fusion Advantage components further warrants components will not rust, peel, chip, crack, mold or mildew for 7 years.



Shipping Information							
Unit Wt.	Unit Shipping Wt. UPS	Unit Shipping Wt. Truck (14 Units)	Unit Ship Size w/Pallet	Max Units per Pallet	Pallet Wt. 68" x 48"	Total No. Pkgs	Shipping Class
327 lbs	N/A	347 lbs/unit	42 cu. ft.	2	50 lbs	8	150

Revised: 10/01/13-7 Copyright © 2013 ANOVA™

3 TABLE DETAIL  
MANUFACTURER SPECIFICATION SHEET NTS



**L1395 — Rendezvous ADA Table with 3 Contour Seats**  
46" diameter steel ADA table with three contour seats, surface mount

211 North Lindbergh Blvd.  
St. Louis, MO 63141  
800.231.1327 tel | 314.754.0835 fax  
specify@anovafurnishings.com

**Material**  
The table has a 46.25" diameter table top and features three contour seats and meets ADA requirements. The solid surface top is 12-gauge steel and features a durable 1.5" square steel tube edge. The seats are 12-gauge slotted steel with a .75" gap slotted pattern and feature a reinforced frame connection. The top also features a 1.64" diameter umbrella hole in the center. The top is designed to support 100 lbs. per square foot and the seats will support 200 lbs. per linear foot.

The table frame and legs are made of 2.38" O.D. steel tubing and feature a built-in umbrella holder. The table legs have feet with predrilled 4" diameter holes for surface mounting to prevent movement. Table must be surface mounted for stability and to comply with warranty and Federal regulations; mounting hardware is not included.

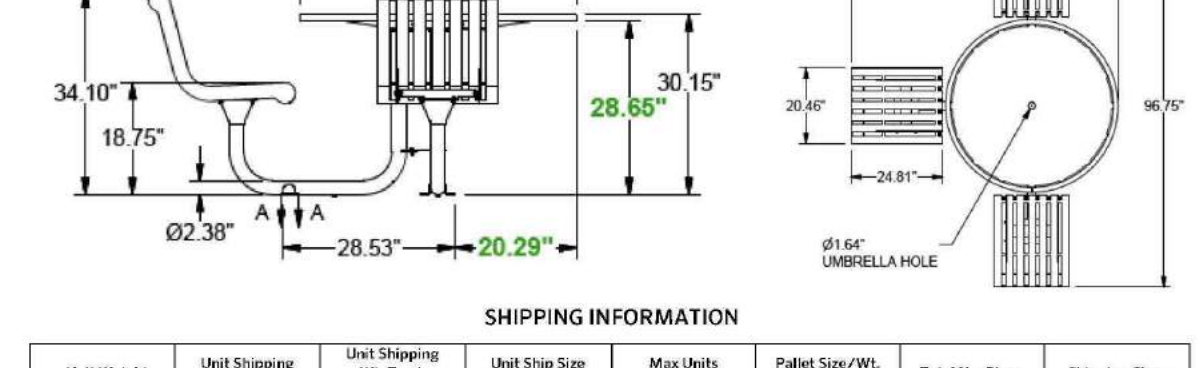
**Finish**  
Solid surface steel table top and steel slat seats are protected by the patented Fusion Advantage™ finish. The plastisol coating has an average thickness of .125" and is encapsulated with a richly tinted, high performance powder coating that won't rust, fade, peel, chip, crack, mold or mildew. The finish has been tested to the requirements of ASTM E1334 and determined to be in compliance with California Uniform Fire Code 1103.2.1.4.2.

**Color**  
See website or sales representative for color choices.

**Assembly**  
The table requires some assembly. Stainless steel assembly hardware is included.

**Maintenance**  
The product is virtually maintenance-free and requires only periodic cleaning with a sponge and a solution of mild detergent and water to remove surface dirt. Do not clean with solvent or petroleum based products.

**Warranty**  
20-year limited structural warranty with 7-year finish warranty from the date of purchase.



Shipping Information							
Unit Weight	Unit Shipping Wt. UPS	Unit Shipping Wt. Truck (14 Units)	Unit Ship Size w/Pallet	Max Units Per Pallet	Pallet Size/Wt. (68" x 48")	Total No. Pkgs.	Shipping Class
276 lbs.	N/A	301 lbs./unit	42 cu. ft.	2	50 lbs.	8	150

Revised: 7/8/2016 Copyright © 2014 ANOVA™ Made in U.S.A.

4 ADA TABLE DETAIL  
MANUFACTURER SPECIFICATION SHEET NTS



**Grills**

**MATERIALS**

**Posts/Legs:**

The pipe shall be 1010 hot rolled, galvanized pipe manufactured from steel, cold formed and high frequency induction welded continuously. Material shall conform to ASTM A-135 and ASTM A-500 and is tested in accordance with ASTM E-8. It has triple coating protection of a hot-dipped uniform zinc galvanized coating followed by a chromate conversion coating with a third coat of a clear, high performance organic polymer coating. The interior has an 81% minimum zinc rich primer applied, capable of providing excellent rust protection and fabrication characteristics. All coatings are applied inside and out after welding. The pipe exceeds the test results of galvanized scheduled 40 pipe in salt spray tests conducted in accordance with ASTM B-117.

**Leg (Model # 1104-8 only):**

The leg shall be constructed of 7 g. 6" x 6" steel with a 3/8" x 16" x 16" plate welded to the bottom for bolt-down attachment to concrete.

**Grill Assy:**

**Model # 1104:**

The grill box shall be constructed of 7 g. steel plate. The grill grid shall be fabricated of 1/2" diameter steel rods. The grill shall have burn proof coil spring handles. The assembly shall be solid welded construction. The grill shall have a welded-in feature to resist theft without restricting the three level adjustment.

**Model # 1104-4:**

The grill box bottom shall be constructed of 7 g. steel plate. The grill box sides shall be 11 g. steel plate. The grill grid shall be fabricated of 1/2" diameter steel rods. The grill shall have burn proof coil spring handles. The assembly shall be solid welded construction. The grill handles shall extend through the sides of the fire box to resist theft without restricting the height adjustment.

**Model # 1104-5:**

The grill box bottom shall be constructed of 7 g. steel plate. The grill box ends and back shall be constructed of 11 g. steel sheet. The grill grid shall be fabricated of 1/2" diameter steel rods. The grill shall have barrel springs for cool handling. The assembly shall be solid welded construction.

**Model 1104-8:**

The grill box shall be constructed of 7 g. steel plate throughout. The grill grid shall be fabricated of 1/2" diameter steel rods. The grill shall have 6" barrel springs for cool handling. The assembly shall have an overall height of 42" with solid welded construction.

**Model # 1104-11:**

The grill box bottom and back shall be constructed of 7 g. steel plate. The grill box sides shall be constructed of 11 g. steel sheet. The grill bars shall be fabricated of 1/2" diameter steel rods. The grate shall be constructed of 3/4" x #9 expanded metal. The grill shall have barrel springs for cool handling. The grill box shall have a collar constructed of 2" (2-3/8" OD) schedule 40 pipe. Pipe galvanizing shall consist of a hot dip process of coating the pipe inside and out with a coating of not less than 1.6 oz. per square foot with an average of 1.8 oz. per square foot. Schedule 40 pipe conforms to ASTM standards A-53. The assembly shall be solid welded construction.

**Fasteners:**

The fasteners shall be steel 1/4" expanding pins.

**Finishes:**

The grills and legs for model 1104-8 each feature black Mira-Cote. The posts for all other models have a galvanized finish.

**Fasteners:**

The fasteners shall be steel 1/4" expanding pins.

**Finishes:**

The grills and legs for model 1104-8 each feature black Mira-Cote. The posts for all other models have a galvanized finish.



**Product Specifications**

**Grills**



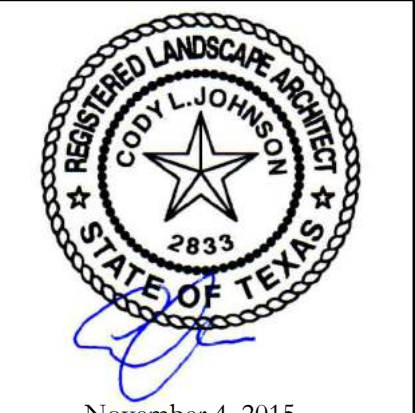
MODEL	1104:	1104-4:	1104-5:	1104-8:	1104-11
Ground Space:	2' x 2'	2' x 2'	1'-2" x 5'-6"	1'-2" x 5'-6"	2' x 2'
Cooking Surface Area:	20" x 14"	20" x 14"	60" x 14"	28" x 36"	12" x 19"
Concrete Required:	0.05 cu. yds.	0.05 cu. yds.	0.10 cu. yds.	0.125 cu. yds.	0.10 cu. yds.
Shipping Weight:	95 lbs.	85 lbs.	200 lbs.	225 lbs.	46 lbs.
Post/Leg Size:	2" pipe (2-3/8" OD)	1-1/2" pipe (1-7/8" OD)	2" pipe (2-3/8" OD)	6" x 6" steel (1-7/8" OD)	1-1/2" pipe (1-7/8" OD)

**DESCRIPTION**  
Model 1104 is adjustable and the grill rotates 360 degrees for draft and smoke control. Model 1104-4 features adjustable grids, and the grill rotates 360 degrees for smoke and draft control. All grills have burn-proof handles and steel plate construction. Model 1104-5 can be adjusted to four heights. Model 1104-8 is a heavy-duty outdoor grill. Model 1104-11 is a smaller, lighter-weight economical grill with a flip-up grate.

Shipping Information							
Unit Weight	Unit Shipping Wt. UPS	Unit Shipping Wt. Truck (14 Units)	Unit Ship Size w/Pallet	Max Units Per Pallet	Pallet Size/Wt. (68" x 48")	Total No. Pkgs.	Shipping Class
276 lbs.	N/A	301 lbs./unit	42 cu. ft.	2	50 lbs.	8	150

Revised: 7/8/2016 Copyright © 2014 ANOVA™ Made in U.S.A.

5 STANDARD PARK GRILL DETAIL  
MANUFACTURER SPECIFICATION SHEET NTS



November 4, 2015

Bar is one inch on original drawing. If not one inch on this sheet, adjust scale as necessary.  
One Inch

LANDSCAPE PLANS  
Landscape Details  
Liberty Square Townhomes  
City of Frisco, Collin County, Texas

CJS PROJECT NO.  
CEI003  
SHEET NO.  
L4 of 4